

ONLINE AUCTION



Surplus to the ongoing operation

CASCADES BEAR ISLAND PAPER MILL

10026 Old Ridge Rd, Ashland, VA 23005

(2) WOOD DEBARKING LINES up to 150 S/T Hour, THERMOMECHANICAL PULP (TMP) PROCESS with up to 2.63MW per M/T produced utilizing (24) REFINER MOTORS (100,000+ TOTAL HP), GOULD PUMPS, VALVES, SCREENS, MCC's, ELECTRICAL WIRE, STAINLESS STEEL, ROLLING STOCK AND MORE.



CLOSES: Wednesday Nov. 20, 11AM ET (ET)

Inspection: Mon & Tues Nov. 18 & 19, 9 AM to 4 PM or by appointment

Bid Online Via
 BidSpotter.com



- AUCTIONS
- LIQUIDATIONS
- FINANCING
- APPRAISALS

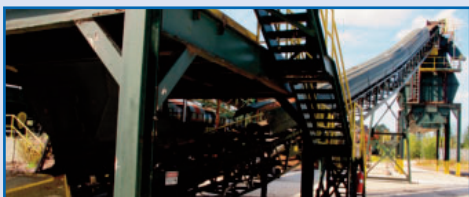
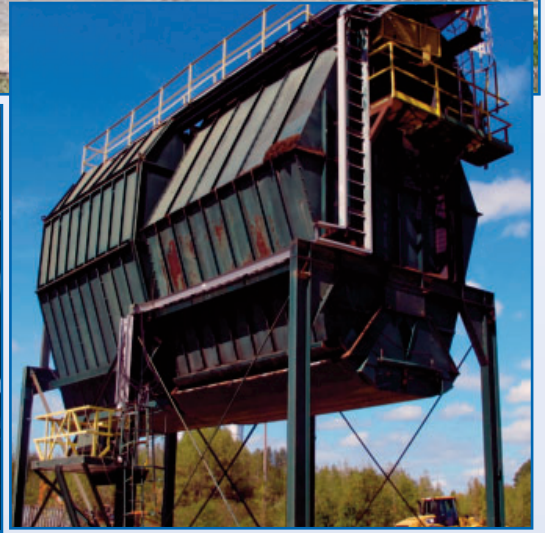
905.669.8893
infinityassets.com

 BidSpotter.com

**DEBARKING LINE Installed in 2012,
Roundwood processing 150 Ton Hour Cap.,
3 Person Operation - To be offered
ENBLOC and in Components**



150 Ton Per Hr. - Installed 2012



DEINK DEPARTMENT



PRIMARY & SECONDARY

VOITH FLOATION CELLS



BACK END

ALFA LAVAL DRUM WASHER



2 AVAIL.

ANDRITZ TWT362-L DOUBLE WIRE PRESS



40 HP

ALFA LAVAL 3470 CELLECO DRUM WASHER



CELLECO CLEANPAC 250 4H-80 CLEANERS



VOITH CELLS & GOULD PUMPS



14 AVAIL.

GOULD 3175 PUMP & VALVES



SCREW CONVEYOR

THERMOMECHANICAL PULP (TMP) PROCESS WITH 2.63MW per MT, (24) REFINER MOTORS (100,000+ TOTAL HP)



CE BAUER REFINER



SPROUT BAUER 575 REJECT PRESS



BAUER ROTARY VALVE



CYCLONE STAINLESS HOPPER



BIRD 400 SCREEN



SPROUT BAUER REFINER

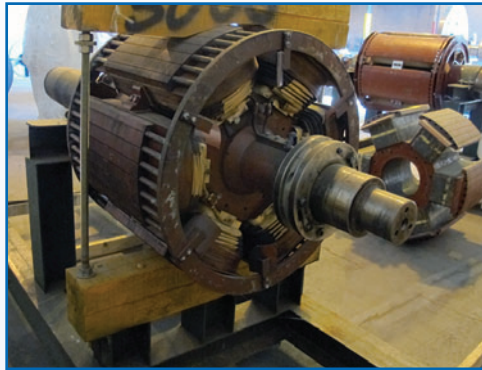


STAINLESS STEEL TANKS

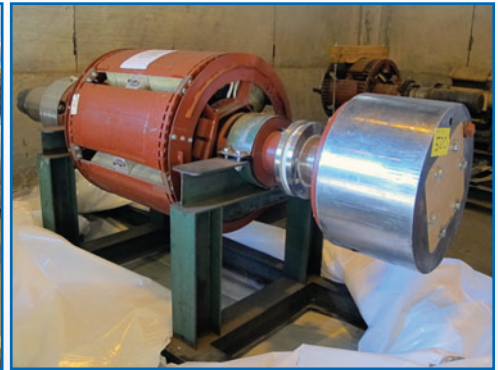
MOTORS & PLANT SUPPORT



3000 HP MOTOR AND DISC



3000 HP MOTOR



4800 HP MOTOR



AEROWOOD 98-10K CHIPPER



1000 HP

2 AVAIL.

EECO MOTOR



4 AVAIL.

ERIEZ MAGNET



GE 400 HP MOTOR



GE 400 HP MOTOR



GE 500 HP MOTOR



GE 800 HP MOTOR



15 AVAIL.

500 HP

GE MOTORS



30 HP

HYDRAULIC POWER PACK



1700 HP

GEARBOX & MOTOR



24x33

JEFFREY RADER 34CS CHIP SIZER



PRECISION PMR ROTARY FEEDER



THIBADO ROTARY LUBE BLOWER



VIEW OF VALVES

LARGE QTY ELECTRICAL PANELS, SWITCHES, JUNCTION BOXES & MCC



HUNDREDS OF FEET OF COOPER RUNS, TECH CABLE, STAINLESS TUBE



ROLLING STOCK & SUPPORT EQUIPMENT



ROLL SPLITTER



105 Ft Boom

70,000 Lbs. Cap.

GROVE RT635C MOBILE CRANE



3 AVAIL.

HYSTER S65XM FORKLIFT



25HP

JAGENBERG VARI-GU R

AGENBEREG SLITTER-REWINDER



2 AVAIL.

MACK HYDRAULIC GRAPPLE



30 TON

300HP DRIVE

P&H GANTRY CRANE



PLC CONTROL

SUND ROLL WRAPPING & CRIMPING LINE



SPARE ROTARY CHIPPER BLADE



COMPUTER INTERFACE

RADER CC2000 CLASSIFIER

TERMS OF SALE



Payment: All payments must be in Cash, Certified Funds, Wire Transfers, or Company Cheques, which must be accompanied with a bank letter guaranteeing irrevocable payment to Infinity Asset Solutions Inc. Invoices up to \$2,000 can be paid by Visa, Mastercard or Interac.

All bidders must register on Bidspotter by Tuesday November 19, 5pm.

A 18% buyers premium will be added to all Online purchases.

A \$2,000 refundable security deposit is required upon online registration.

A 25% deposit is required at time of purchase, balance due by Thursday Nov 21, 2019, 4pm. **NO EXCEPTIONS.**

All goods are sold "As Is, Where Is", ALL SALES ARE FINAL. All subject to prior sale. Complete terms and conditions including removal procedures, are available on our website.

REMOVAL TIMES

All small items by Friday December 6, 2019.

Rigging items to be coordinated with Cascades and Rigger for Timeline.

DIRECTIONS:

From Richmond Virginia Airport (Approx 33 miles, 42 min)

Exit airport get on I-295 N from S Airport Dr, Continue on I-295 N. Take I-95 N to VA-54 W/E Patrick Henry Rd in Ashland. Take exit 92B from I-95 N. Take US-1 N and VA-738 to your destination in Beavertown.

RIGGERS

The following 3 local rigging companies have been approved to work and remove Auction items:

D&D MECHANICAL	804-271-6811 (David Crooks)	dcrooks@ddmech.com
WO CRUBB CRANE RENTAL	804-271-9471 (Keith Rind)	keithrind@wogrubb.com
PINTER & COMPANY	804-449-6842 (Jason Pinter)	pintervp@embarqmail.com

- **AUCTIONS** • **LIQUIDATIONS**
- **FINANCING** • **APPRAISALS**

63 Maplecrete Road, Concord, Ontario L4K 1A5 Canada
 infinityassets.com • Tel: (905) 669-8893

